

A

B

C

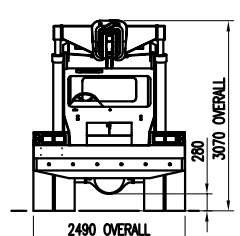
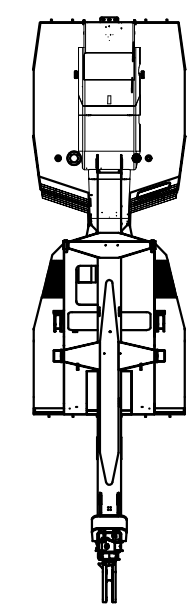
D

A

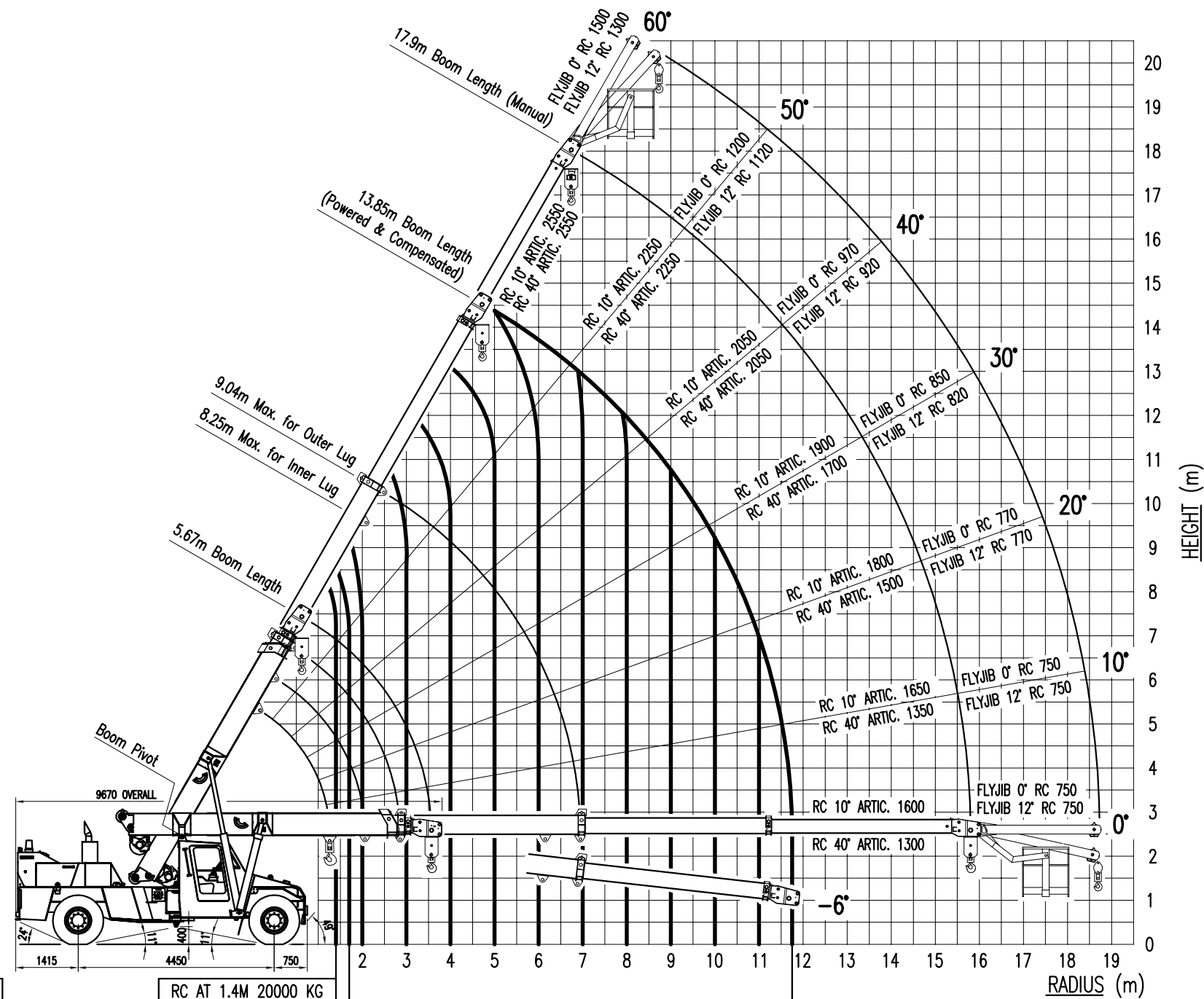
B

C

D



WINCH RATED CAPACITY (MAX.)	
SINGLE PART	4200 KG
TWO PARTS	8400 KG
THREE PARTS	12600 KG
FOUR PARTS	16800 KG



RC AT 1.4M 20000 KG		RC AT 1.7M 19000KG																							
RC (KG) 10° ARTIC.	16800	11400	8300	6500	5250	4350	3700	3200	2800	2450	2250	WINCH RC (KG) 10° ARTIC.													
RC (KG) 40° ARTIC.	12600	9950	7200	5600	4500	3750	3150	2700	2350	2050	1850	WINCH RC (KG) 40° ARTIC.													

NOTE : 1. RC'S AT 1.4 & 1.7M RADIUS ARE FOR LUGS ONLY. OTHER RC'S ARE FOR WINCH ONLY. CHECK RATED CAPACITY CHART FOR OTHER LUG VALUES.  
 2. RHINO HOOK MAXIMUM RC IS 10000 KG. MANBASKET MAXIMUM RC IS 275 KG.  
 3. THIS RADIUS CHART IS A SUMMARY OF RATED CAPACITY MANUAL 16C1320-. REFER TO THE CRANE'S RATED CAPACITY CHART BEFORE ATTEMPTING A LIFT.

				UNLESS OTHERWISE STATED ALL WELDING TO AS1554 CATEGORY SP AND ALL DIMENSIONS IN (mm) & TOLERANCED TO LIMITS SHOWN.				AS 1100		DATE 26/10/04			
								DO NOT SCALE		DRN DJF			
								SHEET A3		CKD			
								SCALE 1:125		APPD			
REV CHANGE DETAILS				CHG No.		BY INTER DATE		Title RADIUS LOAD CHART				DRG No.	
								16T013- AT-20 CRANE				REV -	
												16-T-013	

