

ABN : 86 010 671 048  
ACN : 010 671 048  
E-Mail : [info@terex.com.au](mailto:info@terex.com.au)  
Internet : [www.terex.com.au](http://www.terex.com.au)



Terex Lifting Australia Pty. Ltd.



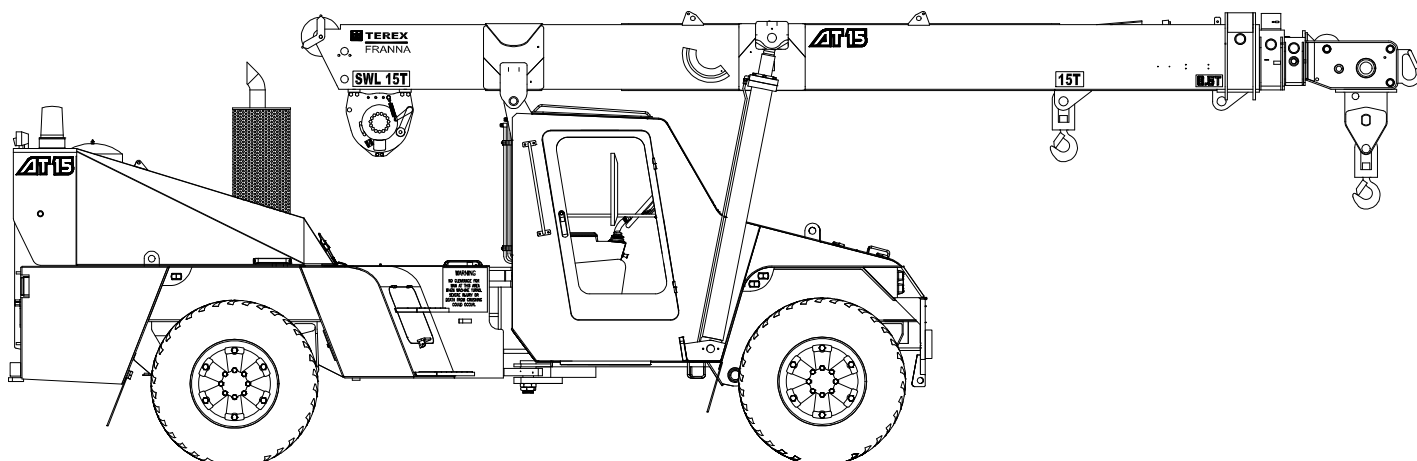
# RATED CAPACITY MANUAL

## MODEL AT-15 SERIES II

BOOK PART NUMBER C1406-

# HYDRAULIC ALL TERRAIN PICK & CARRY CRANE

## 15 TONNE MAXIMUM CAPACITY



**Do not operate this  
crane unless you have  
read and understood  
the information in this  
book.**

# **C1406- RATED CAPACITY MANUAL AT-15 SERIES II**

**ALL PAGES LISTED MUST BE INCLUDED IN THIS BOOK.**

Page No.	Description
	RATED CAPACITY MANUAL MODEL AT-15 SERIES II
0-1	MODEL NUMBER INDEX
0-2	PAGE LIST
	SECTION 1 – WARNINGS
1-1	INDEX, SECTION 1
1-2	CAUTION & ATTACHMENT NOTICE
1-3	DEFINITIONS
1-4	WARNINGS, PAGE 1
1-5	WARNINGS, PAGE 2
1-6	WARNINGS, PAGE 3
1-7	OPERATION ON SIDE SLOPES
1-8	SIDE SLOPE DERATION CHART
	SECTION 2 – OPERATION
2-1	INDEX, SECTION 2
2-2	RANGE DIAGRAM & WORKING AREA
2-3	ATTACHMENT MASSES & HOOK BLOCK RC
2-4	TYRE SPECIFICATIONS & TYRE INFLATION CHART
	SECTION 3 – LIFTING CAPACITY
3-1	LMI CODES
3-2	RANGE DIAGRAM
3-3	LMI DUTY 01 : WINCH - POWERED SECTIONS
3-4	LMI DUTY 03 : WINCH – MANUAL EXTENSION
3-5	LMI DUTY 02 : RHINO HOOK - POWERED SECTIONS
3-6	LMI DUTY 04 : RHINO HOOK – MANUAL EXTENSION
3-7	LMI DUTY 05 & 06 : FLY JIB
3-8	LMI DUTY 10 : INNER LUG ON FIRST EXTENSION
3-9	LMI DUTY 11 : OUTER LUG ON FIRST EXTENSION
3-10	LMI DUTY 12 & 13 : MANBASKET

# **SECTION 1**

# **WARNINGS**

CAUTION NOTE

ATTACHMENT NOTICE

DEFINITIONS

WARNINGS

OPERATION ON SIDE SLOPES

# **! CAUTION !**

IMPROPER CRANE USE, CARE OR OPERATION CAN CAUSE INJURY, DEATH OR PROPERTY DAMAGE.

DO NOT OPERATE THIS MACHINE UNLESS YOU HAVE READ AND UNDERSTAND THE OPERATOR'S MANUAL AND CRANE RATED CAPACITY MANUAL.

COPIES OF OPERATOR'S MANUALS AND CRANE RATED CAPACITY MANUAL MAY BE OBTAINED FROM:



**TEREX | FRANNA**

# **NOTICE**

WRITTEN AUTHORISATION IS REQUIRED FROM TEREX LIFTING AUSTRALIA PTY LTD PRIOR TO THE USE OF ANY ATTACHMENT NOT SPECIFIED IN THE MANUAL.

# DEFINITIONS

**Articulation** – The crane pivots in the middle to allow steering and slewing of the load. Working Areas for the purpose of determining Rated Capacity are less than 10° Articulation, and greater than 10° Articulation, in either direction, from straight ahead. Up to 40° Articulation is possible in either direction. See *Working Area diagram*

**Deration** – A decrease in the Rated Capacity due to external influences, expressed as a percentage.

**Freely Suspended Load** – Load hanging free with no direct external force applied except by the winch rope.

**Load Radius** – Horizontal distance from the centre of the front wheels forwards to the centre of the winch rope or tackle with load applied. “Radius” on Rated Capacity charts refers to the Load Radius in metres.

**Loaded Boom Angle** – This is given to assist in setting up the crane only. It gives only an approximation of the Load Radius for a specified boom length. No allowance is made for boom or tyre deflection. “Boom Angle” on Rated Capacity charts refers to the Loaded Boom Angle in degrees.

**Load Moment Indicator (LMI)** - A system which indicates, visually and audibly, to the operator when the Rated Capacity is approached and reached.

**Rated Capacity (RC)** – The total Freely Suspended Load, including the mass of material and load handling equipment, that the machine can safely lift under ideal conditions at a given boom length and Load Radius.

**Side Load** – Any external force applied either to the boom or load in a horizontal direction.

**Work Areas** – Area measured in an arc about the centre pivot as shown on the Working Area diagram. The “Articulation (green/amber)” icon on the LMI indicates which zone the crane is in. Green indicates less than 10° Articulation. Amber indicates greater than 10° Articulation.

# ! WARNING !

## SPECIAL PRECAUTIONS FOR ARTICULATED CRANES

THERE IS A POTENTIAL FOR CRUSHING BETWEEN FRONT AND REAR CHASSIS WHEN THE MACHINE ARTICULATES. NEVER STAND IN THE PIVOT AREA WHEN THE ENGINE IS RUNNING OR EMERGENCY STEERING PUMP IS OPERATING. ALWAYS REMOVE THE KEY FROM THE IGNITION BEFORE WORKING IN THE PIVOT AREA.

DO NOT LEAVE IGNITION KEY SWITCHED ON WITH ENGINE STOPPED AND PARK BRAKE OFF, AS EMERGENCY HYDRAULIC STEERING PUMP WILL ACTIVATE.

## GENERAL

1. This machine has been designed to meet the requirements of AS1418.1 & 1418.5 and has been tested in accordance with these standards for pick and carry operation on tyres.
2. Rated Capacities shown are for this machine as originally manufactured by Terex Lifting Australia Pty Ltd. The Rated Capacities only apply when all the instructions in this book are rigidly followed. Modifications to this machine or use of equipment other than that specified can result in a reduction in Rated Capacity.
3. If improperly operated or maintained, this machine can be hazardous. Operation and maintenance of this machine must be in compliance with the information documented in the operators, service and parts manuals furnished. If these manuals are missing, obtain replacements through Terex Lifting Australia Pty Ltd or their agents.

## SET-UP

4. Reduced crane Rated Capacities for the particular job shall be established, by the operator, with due allowance for adverse operating conditions. These conditions include the supporting surface, pendulum action of the load, jerking or sudden stops of the load and other factors affecting stability, two machine lifts, electrical wires, adverse weather, wind, hazardous surroundings, experience of personnel, etc.
5. Rated Capacity is based on Freely Suspended Loads with the machine on a firm, level (max. 1% slope / 0.6°) and uniform surface. Lifting, or travelling with a load, on soft or uneven ground can be hazardous and will reduce the Rated Capacity of the crane. Refer to the "OPERATION ON SIDE SLOPES" in this manual. No attempt shall be made to drag the load along the ground in any direction.
6. Wind forces on the boom, resulting from winds up to 10 m/s (36 km/h), are incorporated in the Rated Capacity. Any additional Side Loading due to wind forces on the load will reduce the Rated Capacity, and must be considered.

# ! WARNING !

7. Rated Capacities above the red line are based on the machine's hydraulic or structural competence and not on machine stability. Rated Capacities below the red line are based on machine stability.
8. Rated Capacities include the mass of hooks, blocks, slings and auxiliary lifting devices. Their mass must be subtracted, from the listed Rated Capacity, to determine the equivalent net load.
9. Loaded Boom Angles at specified boom lengths give only an approximation of the Load Radius. The Boom Angle before loading should be greater to account for boom deflection increasing the Load Radius as the load is lifted.

## OPERATION

10. Read and understand all warnings and instructional notes.
11. Do not tip the machine to determine allowable lifting capacities.
12. Loads may be lifted from the main boom head on the winch, the rhino hook, the fixed lug, or either of the two sliding lugs on the boom. A flyjib is also available to extend the maximum boom length and a manbasket can be pinned to the head of the boom. Always use the correct Rated Capacity chart for the lifting point in use and ensure the LMI is set to the correct duty. Written authorisation from Terex Lifting Australia Pty Ltd is required prior to the use of any attachment not specified in the manual.
13. Lifting from more than one lifting point simultaneously is neither intended nor approved.
14. Handling of personnel from the boom is neither intended nor approved, except in a Terex Lifting Australia supplied manbasket, correctly installed on the head of the boom, or other approved arrangement.
15. When either the boom length or Load Radius or both are between values listed, the smallest load shown at either the next larger Load Radius or boom length shall be used, or the interpolated value shown on the LMI may be used.
16. Side Loading of the machine and load swing out may cause structural failure or machine tip-over. Side Loads may be generated by: lifting when not level; sudden acceleration or deceleration in Articulating with a load; dragging a load; pushing a load; wind forces on load and boom structure.
17. Rated Capacity of the manual extension is determined by Loaded Boom Angle. The boom may be retracted and extended with the manual set, however, the Rated Capacity does not change from the fully extended position for the given Loaded Boom Angle.
18. It is safe to attempt to telescope any load within the limits of the Rated Capacity Manual. The maximum load that may be telescoped is limited by hydraulic pressure, Loaded Boom Angle and powered boom sections lubrication.

# ! WARNING !

19. The winch rope is fully compensated for boom extension. The only exception is when the manual extension is being set. Refer to the operator's manual for the manual setting procedure. Once it is set the compensation is fully functional.
20. Do not allow the winch rope to unwind fully. Always ensure a minimum of 2 wraps of rope remain on the winch drum. Note the areas on the range diagram where the fall block cannot reach the ground on 4 or 3 parts of rope.
21. Rated Capacity depends on tyre rating, tyre condition and tyre inflation pressure. All tyres must be in good condition and must be inflated to the recommended pressure before attempting a lift.
22. Pick & carry operation is permitted through the full Articulation range, however, Rated Capacity is reduced above 10° Articulation. Use the reduced capacities in the chart if entering this Articulation zone during the operation.
23. The maximum speed for pick & carry operation is 0.4m/s (1.44km/h). The transfer case shall be set to low range.
24. Operation of this crane in excess of the Rated Capacity and disregard of the instructions is hazardous.



# OPERATION ON SIDE SLOPES

Mobile Cranes are primarily designed to be used on firm, flat, level ground (to within 1% gradient), according to AS 1418.5, any deviation from this requires that the Rated Capacity shall be reduced accordingly. As per AS 2550.5 – negotiation of slopes by mobile cranes travelling with Freely Suspended Loads should be avoided. The following precautions should be taken when operating on side slopes of up to 5° (8.75% gradient) – **REMEMBER** surface depressions and potholes will create the same effect as a side slope.

- Ensure the tyres are correctly **INFLATED** as per the rated capacity manual.
- Ensure the ground condition is **FIRM** enough to support the axle loads.
- **REDUCE** the Rated Capacity of the crane by the percentage value for the crane as shown in figure 1 for operating on side slopes up to 5° (8.75% gradient) - **REMEMBER** the crane's load indicator will **NOT** automatically derate the Rated Capacity.
- Use the crane's side slope inclinometer as a guide only, it is most accurate when the crane's Articulation is straight ahead without suspending a load. All Articulated chassis cranes will show some degree of side tilt, when Articulated with a load – this should not be confused with the ground's side slope.
- Use the **MINIMUM** boom length and Loaded Boom Angle practical to keep the boom tip as close to the ground as possible.
- Keep the load as **CLOSE** to the ground as possible.
- Use the **MINIMUM** Articulation angle practical - **REMEMBER** the crane will side tilt and hence the hook will move towards the direction of Articulation whilst steering.
- Keep the load on the **UPHILL** side of the crane where possible, especially when Articulated – **REMEMBER** the working Load Radius will increase if the load is suspended in the downhill position.
- Load swing greatly reduces stability – **REMEMBER** to tagline loads to prevent pendulum motion of the load. Travel and crane motions should be applied gently to minimise this effect.



# **SECTION 2**

# **OPERATIONS**

RANGE DIAGRAM AT-15

WORKING AREA DIAGRAM

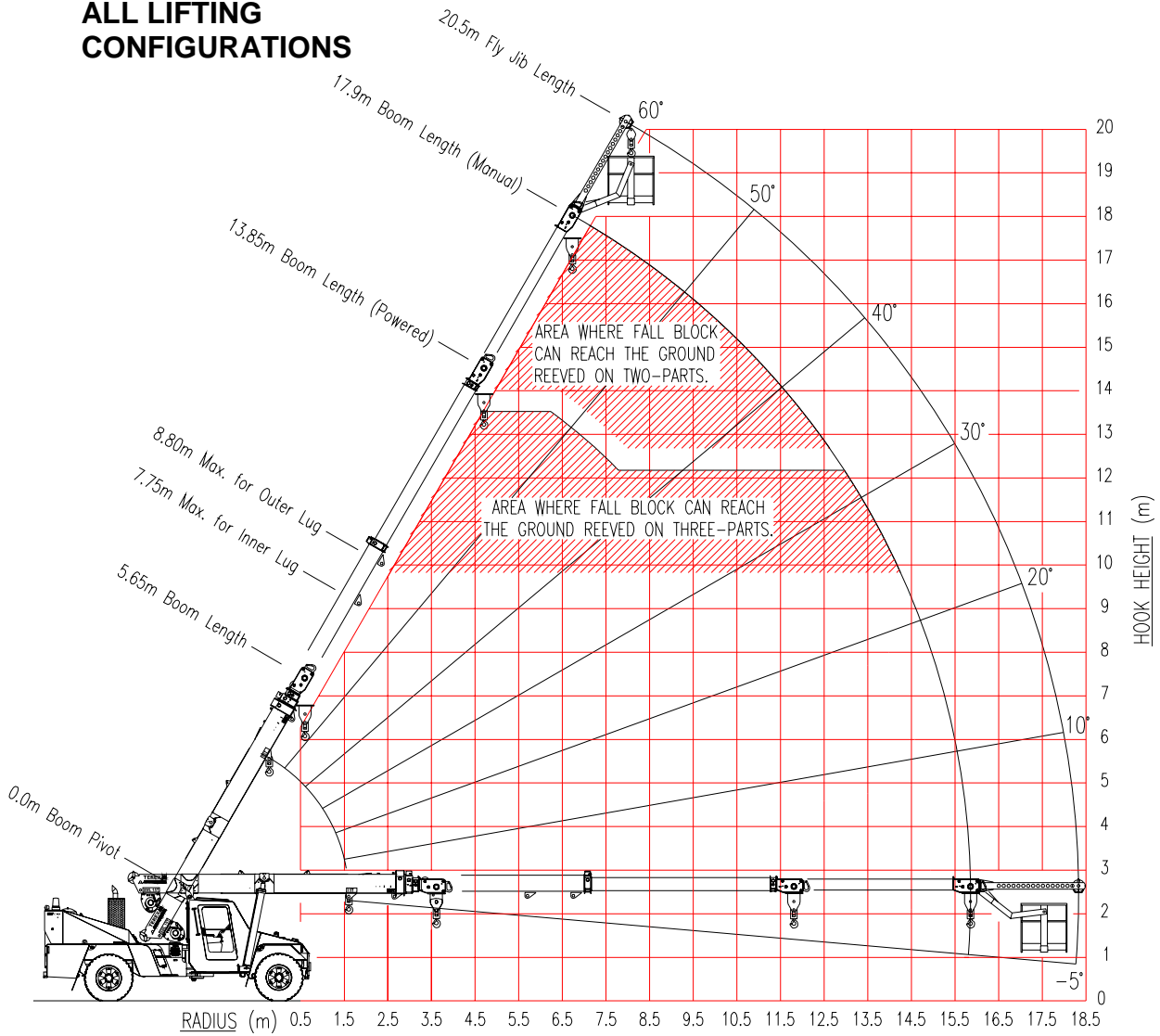
ATTACHMENT MASSES

HOOK BLOCK RC

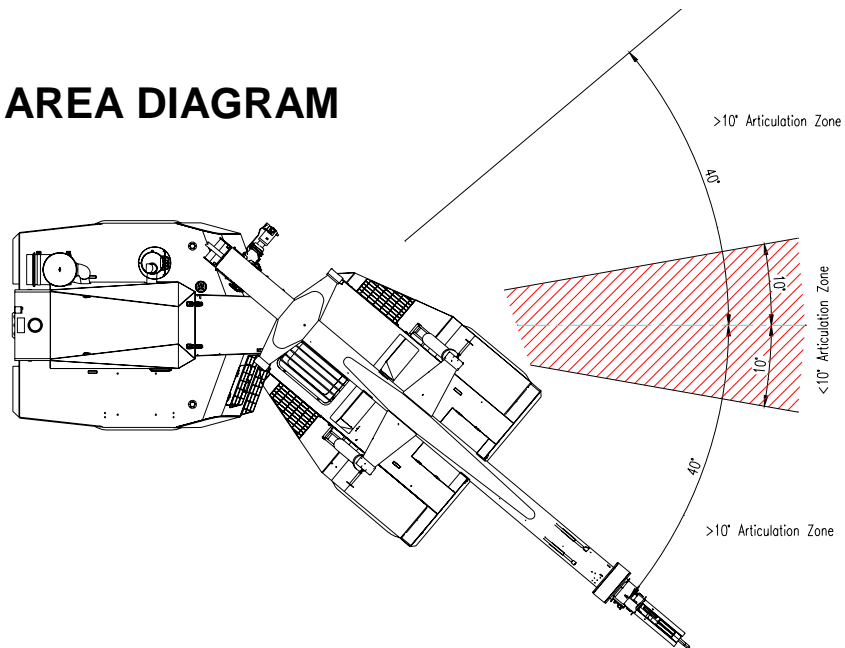
TYRE SPECIFICATIONS

TYRE INFLATION CHART

# RANGE DIAGRAM AT-15 SHOWING ALL LIFTING CONFIGURATIONS



## WORKING AREA DIAGRAM



## ATTACHMENT MASSES

<b>SINGLE PART HOOK BLOCK</b>	<b>PL16M2090</b>	<b>30 kg</b>
<b>TWO/THREE PART HOOK BLOCK</b>	<b>PLA2018</b>	<b>70 kg</b>
<b>15 METRIC TONNE HOOK</b>	<b>PP2153200</b>	<b>15 kg</b>
<b>12 METRIC TONNE SPREADER BAR</b>	<b>PL16A3035</b>	<b>94 kg</b>
<b>15 METRIC TONNE SPREADER BAR</b>	<b>PL15A8023</b>	<b>100 kg</b>

**NOTE :**        **THESE MASSES APPLY ONLY TO TEREX LIFTING AUSTRALIA PTY LTD SUPPLIED EQUIPMENT.**

## HOOK BLOCK RC

Number of Parts of Rope	Permissible HOOK BLOCK RC (kg)
<b>1</b>	<b>3 500</b>
<b>2</b>	<b>7 000</b>
<b>3</b>	<b>10 500</b>

**Wire Rope :**        **Ø13mm 35W x 7 Non-rotating Compak**  
**Minimum Breaking Force 138 kN**  
**Length - 60m**

## TYRE SPECIFICATIONS

Type	Condition	Speed	Load Rating
11.00 x 20 Dual Tyres	Pick & Carry	<1.44 km/h	7100 kg per tyre at 830 kPa (120 psi) (dual fitment)
	Highway	90 km/h	2625 kg per tyre at 690 kPa (100 psi) (dual fitment)
445/65R22.5 Single Tyres	Pick & Carry	<1.44 km/h	13870 kg per tyre at 920 kPa (133 psi) 12650 kg per tyre at 830 kPa (120 psi) (single fitment)
	Highway	90 km/h	5250 kg per tyre at 660 kPa (95 psi) (single fitment)

## TYRE INFLATION CHART

Type	Position	Inflation Pressure	
		Pick & Carry	Highway Travel
11.00 x 20 Dual Tyres	Front	830 kPa (120 psi) (Max RC 15 tonne)	830 kPa (120 psi)
	Rear	690 kPa (100 psi)	690 kPa (100 psi)
445/65R22.5 Single Tyres	Front	830 kPa (120 psi) (Max RC 12 tonne)	830 kPa (120 psi)
		920 kPa (133 psi) (Max RC 15 tonne)	DO NOT USE AT 920 kPa (133 psi)
	Rear	660 kPa (95 psi)	660 kPa (95 psi)

# **SECTION 3**

## **LIFTING CAPACITY**

### **RANGE DIAGRAM (ALL LIFTS)**

**LMI DUTY 01 : LIFTING CAPACITY ON WINCH  
- POWERED SECTIONS**

**LMI DUTY 03 : LIFTING CAPACITY ON WINCH  
- MANUAL EXTENSION**

**LMI DUTY 02 : LIFTING CAPACITY ON RHINO HOOK  
- POWERED SECTIONS**

**LMI DUTY 04 : LIFTING CAPACITY ON RHINO HOOK  
- MANUAL EXTENSION**

**LMI DUTY 05 : LIFTING CAPACITY ON FLYJIB  
- POWERED SECTIONS**

**LMI DUTY 06 : LIFTING CAPACITY ON FLYJIB  
- MANUAL EXTENSION**

**LMI DUTY 10 : LIFTING CAPACITY ON INNER LUG  
- ON FIRST EXTENSION**

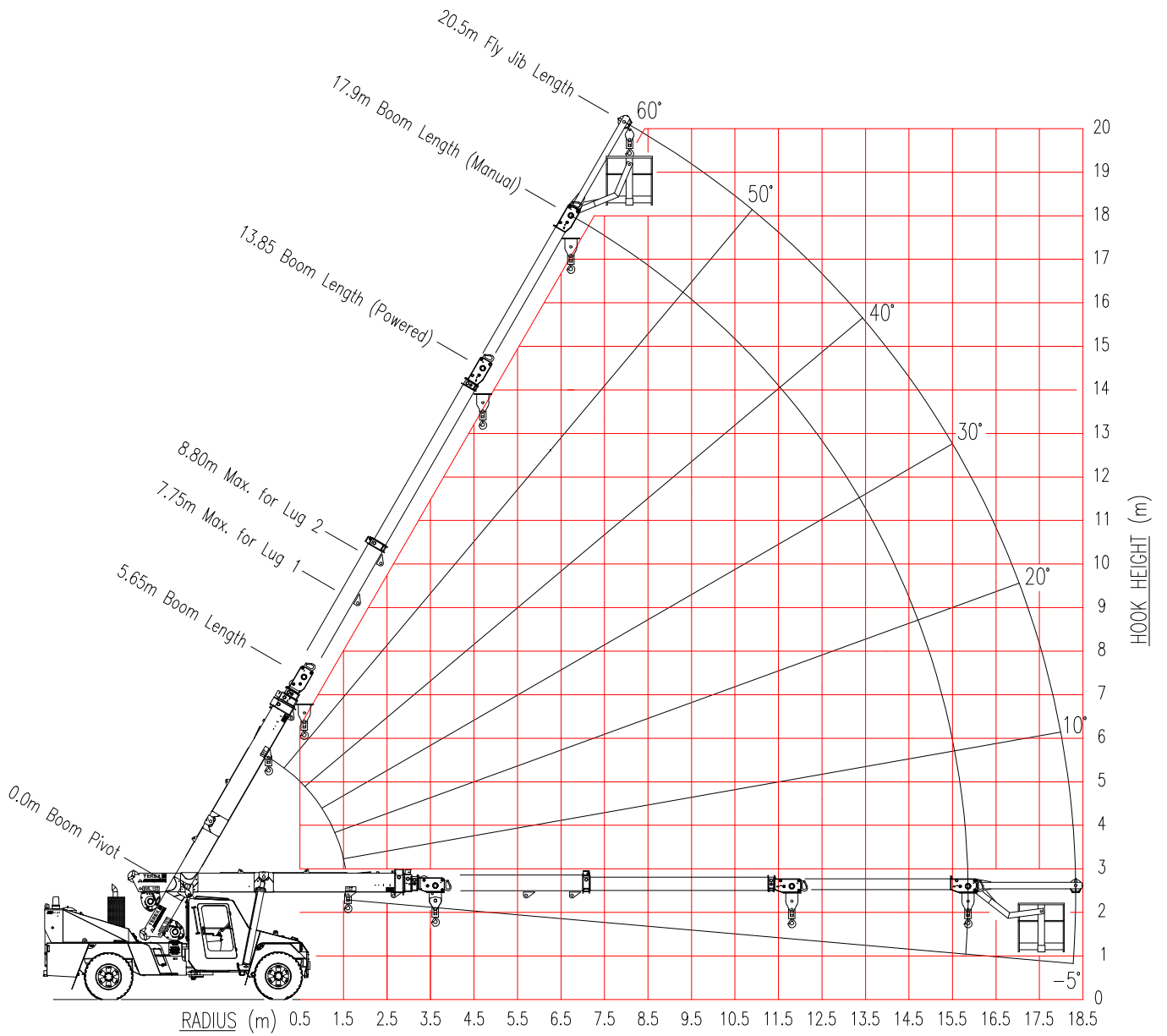
**LMI DUTY 11 : LIFTING CAPACITY ON OUTER LUG  
- ON FIRST EXTENSION**

**LMI DUTY 12 : LIFTING CAPACITY IN MAN BASKET  
- POWERED SECTIONS**

**LMI DUTY 13 : LIFTING CAPACITY IN MAN BASKET  
- MANUAL EXTENSION**

# RANGE DIAGRAM AT-15 SERIES II

## SHOWING ALL LIFT CONFIGURATIONS







	RC (KG) LESS THAN 10 DEG ARTICULATION
	RC (KG) GREATER THAN 10 DEG ARTICULATION
	BOOM ANGLE

*Weight of slings & hook block to be added to load*  
*Read and understand warning notes before operating crane*  
*Loads above bold red line are structural*

MANUAL EXT'N	
MAX LENGTH 17.91	
MAX RADIUS	RC
<b>6.72</b>	<b>1850</b>
	<b>60</b>
<b>9.29</b>	<b>1600</b>
	<b>50</b>
<b>11.53</b>	<b>1300</b>
	<b>40</b>
<b>13.35</b>	<b>1150</b>
	<b>30</b>
<b>14.70</b>	<b>1050</b>
	<b>20</b>
<b>15.54</b>	<b>1050</b>
	<b>10</b>
<b>15.86</b>	<b>1050</b>
	<b>0</b>

**NOTE :**  
 17.9m Boom length includes Manual 3rd extension.  
 Ratings for Manual extension are structural & based on Boom Angle, not radius. The ratings do not change if the power sections are retracted with the manual extended.

# LMI Duty Lifting on RHINO HOOK

**02**

- RC (KG) LESS THAN 10 DEG ARTICULATION
- RC (KG) GREATER THAN 10 DEG ARTICULATION
- BOOM ANGLE OR (RADIUS AT 0 DEG BOOM ANGLE)

Weight of slings & hook block to be added to load  
Read and understand warning notes before operating crane  
Loads above bold red line are structural

**NOTE: When using the rhino hook, ensure the winch rope is fully tensioned.**

RADIUS	BOOM LENGTH (m)																	
	5.95	6.50	7.00	7.50	8.00	8.50	9.00	9.50	10.00	10.50	11.00	11.50	12.00	12.50	13.00	13.50	14.00	14.15
1.6	8000	8000	8000	8000														
	8000	8000	8000	8000														
2.0	50	54	57	59														
	8000	8000	8000	8000	8000													
2.5	45	50	53	56	58	60												
	8000	8000	8000	8000	8000	8000	8000											
3.0	38	44	48	51	54	56	58	60										
	7750	8000	8000	8000	8000	8000	8000	8000	8000	7950								
3.5	30	37	42	46	49	52	55	57	59	60								
	7250	7250	7250	7250	7200	7200	7200	7200	7200	7200	6300	5700						
4.0	19	30	36	41	45	48	51	53	55	57	59	60						
	6450	6450	6450	6450	6450	6450	6400	6400	6400	6400	6300	5700						
4.5	6400	6250	6250	6250	6250	6250	6200	6200	6200	6200	5850	5300	5050	4850				
	5700	5550	5550	5550	5550	5550	5500	5500	5500	5500	5500	5300	5050	4850				
5.0	(3.90)	20	29	35	39	43	46	49	52	54	56	57	59	60				
	5500	5450	5450	5450	5450	5450	5450	5450	5450	5450	5450	4950	4700	4550	4350	4200		
6.0	4900	4850	4850	4850	4850	4850	4850	4850	4800	4800	4800	4800	4700	4550	4350	4200		
	(4.45)	19	28	34	38	42	45	48	50	52	54	54	56	57	59	60		
7.0	4900	4850	4850	4850	4850	4850	4850	4850	4800	4800	4800	4600	4400	4250	4100	3950	3800	3750
	4300	4300	4300	4300	4300	4300	4300	4250	4250	4250	4250	4250	4250	4250	4100	3950	3800	3750
8.0	(4.95)	19	27	33	37	41	44	47	49	51	51	53	55	56	58	59	59	59
	4350	4350	3950	3900	3900	3900	3900	3900	3900	3900	3900	3900	3900	3750	3600	3500	3200	3200
9.0	3850	3450	3450	3450	3450	3450	3450	3450	3450	3450	3450	3400	3400	3400	3400	3400	3200	3200
	(5.45)	17	25	31	35	39	42	45	47	49	51	53	54	55	56	58	59	59
10.0																		
11.0																		
12.00																		

**LMI Duty**  
**Lifting on RHINO HOOK**  
**MANUAL EXTENDED**

	RC (KG) LESS THAN 10 DEG ARTICULATION
	RC (KG) GREATER THAN 10 DEG ARTICULATION
	BOOM ANGLE

*Weight of slings & hook block to be added to load*  
*Read and understand warning notes before operating crane*  
*Loads above bold red line are structural*

MANUAL EXT'N	
MAX LENGTH 18.20	
MAX RADIUS	RC
<b>7.01</b>	<b>1750</b>
	<b>60</b>
<b>9.58</b>	<b>1500</b>
	<b>1500</b>
	<b>50</b>
<b>11.82</b>	<b>1200</b>
	<b>1200</b>
	<b>40</b>
<b>13.64</b>	<b>1050</b>
	<b>1050</b>
	<b>30</b>
<b>14.99</b>	<b>1000</b>
	<b>1000</b>
	<b>20</b>
<b>15.83</b>	<b>1000</b>
	<b>950</b>
	<b>10</b>
<b>16.15</b>	<b>1000</b>
	<b>900</b>
	<b>0</b>

**NOTE :**  
 18.2m Boom length includes Manual 3rd extension.  
 Ratings for Manual extension are structural & based on Boom Angle, not radius. The ratings do not change if the power sections are retracted with the manual extended.

**LMI Duty**  
**Lifting on FLYJIB**  
**MANUAL RETRACTED**

**05**

FLYJIB	
MAX LENGTH 16.46	
MAX RADIUS	RC
<b>6.04</b>	<b>750</b>
	<b>750</b>
	<b>60</b>
<b>8.40</b>	<b>700</b>
	<b>700</b>
	<b>50</b>
<b>10.44</b>	<b>650</b>
	<b>650</b>
	<b>40</b>
<b>12.11</b>	<b>600</b>
	<b>600</b>
	<b>30</b>
<b>13.35</b>	<b>550</b>
	<b>550</b>
	<b>20</b>
<b>14.13</b>	<b>500</b>
	<b>500</b>
	<b>10</b>
<b>14.41</b>	<b>500</b>
	<b>500</b>
	<b>0</b>

	RC (KG) LESS THAN 10 DEG ARTICULATION
	RC (KG) GREATER THAN 10 DEG ARTICULATION
	BOOM ANGLE

*Weight of slings & hook block to be added to load  
 Read and understand warning notes before  
 operating crane  
 Loads above bold red line are structural*

**NOTE :**  
 16.46m Boom length includes Flyjib.  
 Ratings for Flyjib are structural & based  
 on Boom Angle, not radius. The ratings do not  
 change if the power sections are retracted with  
 the Flyjib installed.

**LMI Duty**  
**Lifting on FLYJIB**  
**MANUAL EXTENDED**

**06**

MANUAL EXT'N	
MAX LENGTH 20.51	
MAX RADIUS	RC
<b>8.07</b>	<b>750</b>
	<b>750</b>
	<b>60</b>
<b>11.00</b>	<b>700</b>
	<b>700</b>
	<b>50</b>
<b>13.54</b>	<b>650</b>
	<b>650</b>
	<b>40</b>
<b>15.62</b>	<b>600</b>
	<b>600</b>
	<b>30</b>
<b>17.15</b>	<b>550</b>
	<b>550</b>
	<b>20</b>
<b>18.11</b>	<b>500</b>
	<b>500</b>
	<b>10</b>
<b>18.46</b>	<b>500</b>
	<b>500</b>
	<b>0</b>

	RC (KG) LESS THAN 10 DEG ARTICULATION
	RC (KG) GREATER THAN 10 DEG ARTICULATION
	BOOM ANGLE

*Weight of slings & hook block to be added to load  
 Read and understand warning notes before  
 operating crane  
 Loads above bold red line are structural*

**NOTE :**  
 20.51m Boom length includes Manual 3rd extension  
 & Flyjib. Ratings for Flyjib are structural & based  
 on Boom Angle, not radius. The ratings do not  
 change if the power sections are retracted with  
 the manual extended.

Weight of slings & hook block to be added to load  
Read and understand warning notes before operating crane  
Loads above bold red line are structural

	RC (KG) LESS THAN 10 DEG ARTICULATION
	RC (KG) GREATER THAN 10 DEG ARTICULATION
	BOOM ANGLE OR (RADIUS AT 0 DEG BOOM ANGLE)

RADIUS	BOOM LENGTH (m)								
	3.65	4.00	4.50	5.00	5.50	6.00	6.50	7.00	7.75
1.6	15000	15000	15000	14500	13650	12550	11700	11200	
	13900	13950	13850	13800	13650	12550	11700	11200	
	(1.60)	24	36	43	48	53	56	59	
2.0		12550	12250	12200	12150	11500	10700	10250	9700
		11150	10850	10800	10750	10700	10650	10250	9700
		(1.95)	26	36	43	48	51	55	59
2.5			9700	9500	9450	9400	9350	9250	8750
			8550	8350	8350	8300	8250	8250	8200
			(2.45)	25	34	41	46	49	54
3.0				7800	7650	7600	7600	7550	7550
				6850	6700	6700	6650	6650	6600
				(2.95)	23	33	39	44	49
3.5					6450	6350	6300	6300	6250
					5650	5550	5500	5500	5450
					(3.45)	22	31	38	44
4.0						5400	5350	5350	5300
						4700	4650	4650	4600
						(3.95)	22	30	39
4.5							4650	4600	4550
							4000	3950	3950
							(4.45)	21	32
5.0								4000	3950
								3450	3400
								(4.95)	25
5.5									3450
									2950
									13
5.7									3300
									2800
									(5.70)

Weight of slings & hook block to be added to load  
Read and understand warning notes before operating crane  
Loads above bold red line are structural

	RC (KG) LESS THAN 10 DEG ARTICULATION
	RC (KG) GREATER THAN 10 DEG ARTICULATION
	BOOM ANGLE OR (RADIUS AT 0 DEG BOOM ANGLE)

RADIUS	BOOM LENGTH (m)								
	4.70	5.00	5.50	6.00	6.50	7.00	7.50	8.00	8.80
1.6	15000	15000	14650	14000	13050	11900			
	14650	14550	14400	14000	13050	11900			
	39	43	48	53	56	59			
2.0	12900	12850	12700	12600	12000	10900	10150		
	11500	11450	11350	11250	11150	10900	10150		
	31	36	43	48	51	55	57		
2.5	10100	10050	9950	9900	9800	9750	9200	8850	7700
	9000	8950	8850	8800	8700	8650	8600	8550	7700
	15	25	34	41	46	49	53	55	59
3.0	9450	8350	8150	8050	8000	7950	7900	7850	7050
	8400	7400	7200	7150	7100	7000	6950	6950	6850
	(2.65)	(2.95)	23	33	39	44	48	51	55
3.5			6900	6750	6700	6650	6600	6550	6500
			6100	5950	5900	5850	5800	5800	5700
			(3.45)	22	31	38	42	46	51
4.0				5850	5700	5700	5650	5600	5550
				5150	5050	5000	4950	4900	4850
				(3.95)	22	30	36	41	47
4.5					5000	4900	4900	4850	4800
					4400	4300	4250	4250	4200
					(4.45)	21	29	35	42
5.0						4350	4250	4250	4200
						3800	3700	3700	3650
						(4.95)	20	28	37
5.5							3800	3750	3700
							3300	3250	3200
							(5.45)	19	31
6.0								3350	3300
								2900	2850
								(5.95)	24
6.5									2950
									2500
									14
6.8									2750
									2350
									(6.75)

**LMI Duty**  
**Lifting in MANBASKET**  
**MANUAL RETRACTED**

**12**

**MAXIMUM MANBASKET RC: 275 KG (SEE NOTE BELOW)**  
**BASKET WEIGHT: 225 KG**

*Read and understand warning notes before operating crane*




**NOTE:**

**THE TOTAL WEIGHT OF THE MANBASKET PLUS MEN AND EQUIPMENT IS NOT TO EXCEED 1/3 OF THE SAFE WORKING LOAD AS READ ON LOAD CHART (LIFTING ON THE WINCH - DUTY 01) FOR THE BOOM LENGTH AND RADIUS BEING USED.**

**LMI Duty**  
**Lifting in MANBASKET**  
**MANUAL EXTENDED**

**13**

MANUAL EXT'N	
MAX LENGTH 17.91	
MAX RADIUS	RC
7.98	275
	275
	60
10.71	275
	275
	50
13.05	205
	205
	40
14.93	155
	155
	30
16.30	125
	125
	20
17.11	125
	90
	10
17.34	125
	90
	0

 RC (KG) LESS THAN 10 DEG ARTICULATION  
 RC (KG) GREATER THAN 10 DEG ARTICULATION  
 BOOM ANGLE

*Read and understand warning notes before operating crane*

*Loads above bold red line are structural*

**NOTE :**

17.91m Boom length includes Manual 3rd extension but not Manbasket. Ratings for Manbasket are structural & based on Boom Angle, not radius. The ratings do not change if the power sections are retracted with the manual extended.